

2010 LAKES AREA CLASSIC SCHEDULE OF EVENTS

Compulsories / Basic Elements Event Line-Up

9:00 a.m. Beginning with 4-minute warm-up

Lobby or West End of Rink

Skater	Club	Level	Event #
Ziegler, Faith*	WFSC	Snowplow	00
Heath, Kelsey	WFSC	Snowplow	00
Hayden, Adeline	DEFSC	Basic 1	01
Ziegler, Brooke*	WFSC	Basic 2	02
Strate, Paige	DEFSC	Basic 2	02
Hansen, Madison*	AFSC	Basic 2	02

Zamboni or East End of Rink

Skater	Club	Level	Event #
Lindgren, Ingrid	DEFSC	Freestyle 1	09
Moran, Audrey	WFSC	Freestyle 1	09
Johnson, Mackensie *	DEFSC	Freestyle 1	09
Penny, Elizabeth *	NSS	Freestyle 1	09
Harstad, Misha *	AFSC	Freestyle 1	09
Willard, Ember*	AFSC	Freestyle 1	09

* indicates participation in the Central MN Basic Skills Competition Series

1:45 min between skates + 4 min warm-up = 14.5

9:15 a.m. Beginning with 4-minute warm-up

Lobby or West End of Rink

Skater	Club	Level	Event #
Fults, Mariah *	AFSC	Basic 3	03
Hiltner, India *	VFSC	Basic 3	03
Groff, April	DEFSC	Basic 3	03
Vagle, Paige	DEFSC	Basic 3	03
Hiltner, Jude *	VFSC	Basic 3	03

Zamboni or East End of Rink

Skater	Club	Level	Event #
Ronke, Tegan *	WFSC	Freestyle 2	10
Markkanen, Mitchel*	DEFSC	Freestyle 2	10
Kielas, Maggie *	TCFSC	Freestyle 2	10
Kaelberer, Mariah *	SCFSC	Freestyle 3	11
Burss, Ramsey *	AFSC	Freestyle 3	11
Dickson, Shayna	RLFSC	Freestyle 3	11

* indicates participation in the Central MN Basic Skills Competition Series

1:45 min between skates + 4 min warm-up = 14.5

9:30 a.m. Beginning with 4-minute warm-up

Lobby or West End of Rink

Skater	Club	Level	Event #
Heath, Courtney	WFSC	Basic 4	04
Moran, Sadie	WFSC	Basic 4	04
Mulder, Jessica	DEFSC	Basic 4	04
Briggs, Desi *	WFSC	Basic 4	04
Nelson, Cheyenne*	DEFSC	Basic 4	04

Zamboni or East End of Rink

Skater	Club	Level	Event #
Vlaminck, Magen	DEFSC	Freestyle 4	12
Lindgren, Alice	DEFSC	Freestyle 4	12
Ronke, Taryn *	WFSC	Freestyle 4	12
Moran, Jani	WFSC	Freestyle 4	12
Lexvold, Ahnika *	SCFSC	Freestyle 5	13

* indicates participation in the Central MN Basic Skills Competition Series

1:45 min between skates + 4 min warm-up = 13

9:43 a.m. Beginning with 4-minute warm-up

Lobby or West End of Rink

Skater	Club	Level	Event #
Kienow, Christy *	WFSC	Basic 5	05
Rice, Olivia *	AFSC	Basic 5	05
Berg, Ashlyn *	DEFSC	Basic 5	05
Fuglie, Emily *	DEFSC	Basic 5	05
Hansen, Hailey*	AFSC	Basic 5	05

Zamboni or East End of Rink

Skater	Club	Level	Event #
Rahn, Marissa	VFSC	LTD Beg.	14
Glomski, Nicolette *	VFSC	Beginner	15
Symanietz, Abbie	BPFC	No Test	16
Torborg, Isabella *	RLFSC	No Test	16

* indicates participation in the Central MN Basic Skills Competition Series

1:45 min between skates + 4 min warm-up = 13

9:56 a.m. Beginning with 4-minute warm-up

Lobby or West End of Rink

Skater	Club	Level	Event #
Glomski, Jocelyn *	VFSC	Basic 6	06
Schaefer, Bailey *	AFSC	Basic 6	06
Manton, Emily *	VFSC	Basic 6	06
Rosenbaum, Rachel*	WFSC	Basic 6	06
Schulte, Michaela *	WFSC	Basic 7	07

Zamboni or East End of Rink

Skater	Club	Level	Event #
Sheets, AnaLea *	AFSC	Pre-Pre	17
Kohrs, Haley	MFSC	Pre-Pre	17
Fischer, Sydney *	DEFSC	Pre-Pre	17
Majerus, Gretchen *	AFSC	Pre-Pre	17
Briggs, Erin *	WFSC	Pre-Pre	17
Ronke, Tatum *	WFSC	Pre-Pre	17

* indicates participation in the Central MN Basic Skills Competition Series

1:45 min between skates + 4 min warm-up = 14.5

Compulsory Events Continued on next page

10:11 a.m. Beginning with 4-minute warm-up

Lobby or West End of Rink

Skater	Club	Level	Event #
Hall, Madisen *	AFSC	Basic 8	08
Jackson, Kellyn *	WFSC	Basic 8	08
Armstrong, Jennifer	WFSC	Basic 8	08
Smude, Sarah	VFSC	Basic 8	08
Lee, Jessie	DEFSC	Basic 8	08

Zamboni or East End of Rink

Skater	Club	Level	Event #
Anderson, Courtney *	MFSC	Pre-Pre	18
Mayfield, Karen *	WFSC	Pre-Pre	18
Ronke, Taylor *	WFSC	Pre-Pre	18
Ruzich, Hanna	VFSC	Pre-Pre	18
Pederson, Katy *	VFSC	Pre-Pre	18

* indicates participation in the Central MN Basic Skills Competition Series

1:45 min between skates + 4 min warm-up = 13

10:24 a.m. Beginning with 4-minute warm-up

Zamboni or East End of Rink

Skater	Club	Level	Event #
Wheaton, Andrea	MFSC	Preliminary	19
Meyer, Michaela	MFSC	Preliminary	19
Kidrowski, Holly *	DEFSC	Preliminary	19
Borka, Samantha *	DEFSC	Preliminary	19
Wood, Allison	AFSC	Preliminary	19

* indicates participation in the Central MN Basic Skills Competition Series

1:45 min between skates + 4 min warm-up = 13

10:37 a.m. RESURFACE

Freeskate w/Music Event Line-Up

10:55 a.m. Beginning with 4-minute warm-up

Skater	Club	Level	Event #
Ziegler, Faith *	WFSC	Snowplow	20
Heath, Kelsey	WFSC	Snowplow	20
Ziegler, Brooke*	WFSC	Basic 2	21
Hansen, Madison*	AFSC	Basic 2	21

* indicates participation in the Central MN Basic Skills Competition Series
2 min between skates + 4 min warm-up = 12

11:07 a.m. Beginning with 4-minute warm-up

Skater	Club	Level	Event #
Fults, Mariah *	AFSC	Basic 3	22
Hiltner, India *	VFSC	Basic 3	22
Vagle, Paige	DEFSC	Basic 3	22
Heath, Courtney	WFSC	Basic 4	23
Moran, Sadie	WFSC	Basic 4	23
Burdick, Elise	RLFSC	Basic 4	23
Briggs, Desi *	WFSC	Basic 4	23
Nelson, Cheyenne*	DEFSC	Basic 4	23

* indicates participation in the Central MN Basic Skills Competition Series
2 min between skates + 4 min warm-up = 20

11:27 a.m. Beginning with 4-minute warm-up

Skater	Club	Level	Event #
Kienow, Christy *	WFSC	Basic 5	24
Rice, Olivia *	AFSC	Basic 5	24
Berg, Ashlyn *	DEFSC	Basic 5	24
Fuglie, Emily *	DEFSC	Basic 5	24
Hansen, Hailey*	AFSC	Basic 5	24

* indicates participation in the Central MN Basic Skills Competition Series
2 min between skates + 4 min warm-up = 14

Freeskate w/Music Events Continued on next page

11:41 a.m. Beginning with 4-minute warm-up

Skater	Club	Level	Event #
Glomski, Jocelyn *	VFSC	Basic 6	25
Schaefer, Bailey *	AFSC	Basic 6	25
Manton, Emily *	VFSC	Basic 6	25
Rosenbaum, Rachel*	WFSC	Basic 6	25
Schulte, Michaela *	WFSC	Basic 7	26

* indicates participation in the Central MN Basic Skills Competition Series
2 min between skates + 4 min warm-up = 14

11:55 a.m. Beginning with 4-minute warm-up

Skater	Club	Level	Event #
Hall, Madisen *	AFSC	Basic 8	27
Jackson, Kellyn *	WFSC	Basic 8	27
Armstrong, Jennifer	WFSC	Basic 8	27
Smude, Sarah	VFSC	Basic 8	27

* indicates participation in the Central MN Basic Skills Competition Series
2 min between skates + 4 min warm-up = 12

12:07 p.m. Beginning with 4-minute warm-up

Skater	Club	Level	Event #
Lindgren, Ingrid	DEFSC	Freeskate 1	28
Hamerlinck, Maggie *	SCFSC	Freeskate 1	28
Moran, Audrey	WFSC	Freeskate 1	28
Johnson, Mackensie *	DEFSC	Freeskate 1	28
Penny, Elizabeth *	NSS	Freeskate 1	29
Harstad, Misha *	AFSC	Freeskate 1	29
Willard, Ember *	AFSC	Freeskate 1	29

* indicates participation in the Central MN Basic Skills Competition Series
2 min between skates + 4 min warm-up = 18

12:25 p.m. Beginning with 4-minute warm-up

Skater	Club	Level	Event #
Ronke, Tegan *	WFSC	Freeskate 2	30
Markkanen, Mitchel*	DEFSC	Freeskate 2	30
Kielas, Maggie *	TCFSC	Freeskate 2	30
Kaelberer, Mariah *	SCFSC	Freeskate 3	31
Burss, Ramsey *	AFSC	Freeskate 3	31
Dickson, Shayna	RLFSC	Freeskate 3	31

* indicates participation in the Central MN Basic Skills Competition Series
2 min between skates + 4 min warm-up = 16

12:41 p.m. Beginning with 4-minute warm-up

Skater	Club	Level	Event #
Vlaminck, Magen	DEFSC	Freeskate 4	32
Lindgren, Alice	DEFSC	Freeskate 4	32
Ronke, Taryn *	WFSC	Freeskate 4	32
Moran, Jani	WFSC	Freeskate 4	32
Urich, Emily	LSS	Freeskate 4	32

* indicates participation in the Central MN Basic Skills Competition Series
2 min between skates + 4 min warm-up = 14

12:55 p.m. Beginning with 4-minute warm-up

Skater	Club	Level	Event #
Lexvold, Ahnika *	SCFSC	Freeskate 5	33
Rahn, Marissa	VFSC	LTD Beg	34
Glomski, Nicolette *	VFSC	Beginner	35
Torborg, Isabella *	RLFSC	No Test	36
Symanietz, Abbie	BPFSC	No Test	36

* indicates participation in the Central MN Basic Skills Competition Series
2 min between skates + 4 min warm-up = 14

Freeskate w/Music Events Continued on next page

1:09 p.m. Beginning with 4-minute warm-up

Skater	Club	Level	Event #
Sheets, AnaLea *	AFSC	Pre-Pre	37
Kohrs, Haley	MFSC	Pre-Pre	37
Fischer, Sydney *	DEFSC	Pre-Pre	37
Majerus, Gretchen *	AFSC	Pre-Pre	37
Briggs, Erin *	WFSC	Pre-Pre	37
Ronke, Tatum *	WFSC	Pre-Pre	37

* indicates participation in the Central MN Basic Skills Competition Series
2 min between skates + 4 min warm-up = 16

1:25 p.m. Beginning with 4-minute warm-up

Skater	Club	Level	Event #
Anderson, Courtney *	MFSC	Pre-Pre	38
Mayfield, Karen *	WFSC	Pre-Pre	38
Ronke, Taylor *	WFSC	Pre-Pre	38
Ruzich, Hanna	VFSC	Pre-Pre	38
Pederson, Katy *	VFSC	Pre-Pre	38

* indicates participation in the Central MN Basic Skills Competition Series
2 min between skates + 4 min warm-up = 14

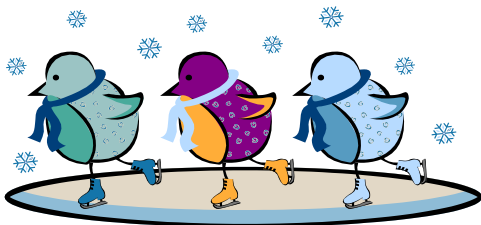
1:39 p.m. Beginning with 4-minute warm-up

Skater	Club	Level	Event #
Wheaton, Andrea	MFSC	Preliminary	39
Meyer, Michaela	MFSC	Preliminary	39
Kidrowski, Holly *	DEFSC	Preliminary	39
Borka, Samantha *	DEFSC	Preliminary	39
Wood, Allison	AFSC	Preliminary	39

* indicates participation in the Central MN Basic Skills Competition Series
2 min between skates + 4 min warm-up = 14

1:53 p.m. RESURFACE

Artistic Showcase w/Music Event Line-Up



2:10 p.m. Beginning with 4-minute warm-up Basic Showcase

Skater	Club	Level	Event #
Hayden, Adeline	DEFSC	Basic A	40
Groff, April	DEFSC	Basic A	40
Moran, Sadie	WFSC	Basic A	40
Nelson, Cheyenne	DEFSC	Basic A	40

2 min between skates + 4 min warm-up = 12

2:22 p.m. Beginning with 4-minute warm-up Basic Showcase

Skater	Club	Level	Event #
Berg, Ashlyn	DEFSC	Basic B	41
Fuglie, Emily	DEFSC	Basic B	41
Glomski, Jocelyn	VFSC	Basic B	41
Jackson, Kellyn	WFSC	Basic B	41

2 min between skates + 4 min warm-up = 12

Artistic Showcases w/Music Events
Continued on next page

2:34 p.m. Beginning with 4-minute warm-up Freestyle Showcase

Skater	Club	Level	Event #
Lindgren, Ingrid	DEFSC	Freestyle A	42
Johnson, Mackensie	DEFSC	Freestyle A	42
Willard, Ember	AFSC	Freestyle A	42
Ronke, Tegan	WFSC	Freestyle A	42
Markkanen, Mitchel	DEFSC	Freestyle A	42
Dickson, Shayna	RLFSC	Freestyle A	42

2 min between skates + 4 min warm-up = 16

2:50 p.m. Beginning with 4-minute warm-up Freestyle Showcase

Skater	Club	Level	Event #
Vlaminck, Magen	DEFSC	Freestyle B	43
Lindgren, Alice	DEFSC	Freestyle B	43
Ronke, Taryn	WFSC	Freestyle B	43
Moran, Jani	WFSC	Freestyle B	43
Lexvold, Ahnika	SCFSC	Freestyle B	43

2 min between skates + 4 min warm-up = 14

3:04 p.m. Beginning with 4-minute warm-up High Showcase

Skater	Club	Level	Event #
Glomski, Nicolette	VFSC	High A	44
Symanietz, Abbie	BPFSC	High A	44
Sheets, AnaLea	AFSC	High A	44
Ronke, Tatum	WFSC	High A	44
Mayfield, Karen	WFSC	High B	45
Kidrowski, Holly	DEFSC	High B	45
Borka, Samantha	DEFSC	High B	45

2 min between skates + 4 min warm-up = 18

3:25 p.m. (est.)  **END**

- ◆ AFSC Alexandria Figure Skating Club; Alexandria, MN
- ◆ BPFSC Breezy Point Figure Skating Club; Breezy Point, MN
- ◆ DEFSC Diamond Edge Figure Skating Club; Willmar, MN
- ◆ LSS LaCrosse Skating School; LaCrosse, WI
- ◆ MFSC Mankato Figure Skating Club; Mankato, MN
- ◆ NSS Northfield Skating School; Northfield, MN
- ◆ RLFSC River Lakes Figure Skating Club; Richmond, MN
- ◆ SCFSC St. Cloud Figure Skating Club; St. Cloud, MN
- ◆ TCFSC Tri-County Figure Skating Club; Lakeville, MN
- ◆ VFSC Vacationland Figure Skating Club; Brainerd, MN
- ◆ WFSC Watertown Figure Skating Club; Watertown, SD



- ◆ **Location & Amenities:** The "Diamond Edge Lakes Area Classic 2010" Basic Skills Competition sponsored by the Diamond Edge Figure Skating Club will be held at the Willmar Civic Center Cardinal Arena located at 2707 Arena Drive NE in Willmar on Saturday, January 16, 2010, beginning at 9:00 a.m. The rink offers a full service concession stand and locker rooms. Each skater will receive a complimentary bag and program when they register.
- ◆ **Practice Ice:** Practice ice will run from 7:00 a.m. to 8:40 a.m. prior to the competition. If you did not pre-purchase practice ice and would like to buy-on the morning of, check at the registration table for availability. Cost will be \$7 per 20 minutes.
- ◆ **Schedule:** After the presentation of the National Anthem; the day's events will begin promptly at 9:00 a.m. The schedule is estimated, but should run close to the printed time line. Each skater should check in with the rink monitor 10-minutes prior to your event so we can keep the competition running on time.

On behalf of the Competition Committee and the Diamond Edge Figure Skating Club Board of Directors, we sincerely thank you all for being apart of our competition.

PRACTICE ICE SCHEDULE ~ FRIDAY, JANUARY 15TH

Group 1 ~ 6:00 - 6:20 p.m.

1	Groff, April	DEFSC	Basic 3	<i>Preorder/pd</i>
2	Vagle, Paige	DEFSC	Basic 3	<i>Preorder/pd</i>
3	Markkanen, Mitchel	DEFSC	Freeskate 2	<i>Preorder/pd</i>
4				
5				
6				
7				
8				
9				
10				

Group 2 ~ 6:20 - 6:40 p.m.

1	Symanietz, Abbie	Breezy Point FSC	No Test	<i>Preorder/pd</i>
2	Lindgren, Ingrid	DEFSC	Freeskate 1	<i>Preorder/pd</i>
3	Lindgren, Alice	DEFSC	Freeskate 4	<i>Preorder/pd</i>
4	Markkanen, Mitchel	DEFSC	Freeskate 2	<i>Preorder/pd</i>
5				
6				
7				
8				
9				
10				

Group 3 ~ 6:40 - 7:00 p.m.

1	Symanietz, Abbie	Breezy Point FSC	No Test	<i>Preorder/pd</i>
2	Lindgren, Ingrid	DEFSC	Freeskate 1	<i>Preorder/pd</i>
3	Lindgren, Alice	DEFSC	Freeskate 4	<i>Preorder/pd</i>
4	Vlaminck, Magen	DEFSC	Freeskate 4	<i>Preorder/pd</i>
5				
6				
7				
8				
9				
10				

Group 4 ~ 7:00 - 7:20 p.m.

1	Meyer, Michaela	MFSC	Preliminary	<i>Preorder/pd</i>
2	Anderson, Courtney	MFSC	Pre-Pre	<i>Preorder/pd</i>
3	Torborg, Isabella	RLFSC	No-Test	<i>Preorder/Owe \$5</i>
4	Dickson, Shayna	RLFSC	Freeskate 3	<i>Preorder/Owe \$5</i>
5				
6				
7				
8				
9				
10				

Group 5 ~ 7:20 - 7:40 p.m.

1	Borka, Samantha	DEFSC	Preliminary	<i>Preorder/pd</i>
2	Urich, Emily	LaCrosse SS	Freeskate 4	<i>Preorder/pd</i>
3	Dickson, Shayna	RLFSC	Freeskate 3	<i>Preorder/pd</i>
4	Ruzich, Hanna	VFSC	Pre-Pre	<i>Preorder/pd</i>
5				
6				
7				
8				
9				
10				

Group 6 ~ 7:40 - 8:00 p.m.

1	Borka, Samantha	DEFSC	Preliminary	<i>Preorder/pd</i>
2	Smude, Sarah	VFSC	Basic 8	<i>Preorder/pd</i>
3	Fuglie, Emily	DEFSC	Basic 5	<i>Preorder/pd</i>
4				
5				
6				
7				
8				
9				
10				

PRACTICE ICE SCHEDULE ~ SATURDAY, JANUARY 16TH

Group 4 ~ 7:00 - 7:20 a.m.

1	Borka, Samantha	DEFSC	Preliminary	<i>Preorder/pd</i>
2	Fischer, Sydney	DEFSC	Pre-Pre	<i>Preorder/pd</i>
3	Wood, Allison	AFSC	Preliminary	<i>Preorder/pd</i>
4	Majerus, Gretchen	AFSC	Pre-Pre	<i>Preorder/pd</i>
5	Holly Kidrowski	DEFSC	Preliminary	<i>Preorder/pd</i>
6				
7				
8				
9				
10				
11				
12				

Group 5 ~ 7:20 - 7:40 a.m.

1	Dickson, Shayna	RLFSC	Freeskate 3	<i>Preorder/pd</i>
2	Hamerlinck, Maggie	SCFSC	Freeskate 1	<i>Preorder/pd</i>
3	Torborg, Isabella	RLFSC	No Test	<i>Preorder/pd</i>
4	Urich, Emily	LaCrosse SS	Freeskate 4	<i>Preorder/pd</i>
5	Penny, Elizabeth	Northfield SS	Freeskate 1	<i>Preorder/pd</i>
6	Johnson, Mackensie	DEFSC	Freeskate 1	<i>Preorder/pd</i>
7	Fuglie, Emily	DEFSC	Basic 5	<i>Preorder/pd</i>
8				
9				
10				
11				
12				

Group 6 ~ 7:40 - 8:00 a.m.

1	Kienow, Christy	WFSC	Basic 5	<i>Preorder/pd</i>
2	Berg, Ashlyn	DEFSC	Basic 5	<i>Preorder/pd</i>
3	Hall, Madisen	AFSC	Basic 8	<i>Preorder/pd</i>
4	Armstrong, Jennifer	WFSC	Basic 8	<i>Preorder/pd</i>
5	Willard, Ember	AFSC	Freeskate 1	<i>Preorder/pd</i>
6	Burss, Ramsey	AFSC	Freeskate 3	<i>Preorder/pd</i>
7	Lindgren, Ingrid	DEFSC	Freeskate 1	<i>Preorder/pd</i>
8	Lindgren, Alice	DEFSC	Freeskate 4	<i>Preorder/pd</i>
9	Kaelberer, Mariah	SCFSC	Freeskate 3	<i>Preorder/pd</i>
10	Vlaminck, Magen	DEFSC	Freeskate 4	<i>Preorder/pd</i>
11				
12				

Group 1 ~ 8:00 - 8:20 a.m.

1	Heath, Kelsey	WFSC	Snowplow	<i>Preorder/pd</i>
2	Heath, Courtney	WFSC	Basic 3	<i>Preorder/pd</i>
3	Hiltner, India	VFSC	Basic 3	<i>Preorder/pd</i>
4	Hiltner, Jude	VFSC	Basic 3	<i>Preorder/pd</i>
5	Groff, April	DEFSC	Basic 3	<i>Preorder/pd</i>
6	Vagle, Paige	DEFSC	Basic 3	<i>Preorder/pd</i>
7	Mulder, Jessica	DEFSC	Basic 4	<i>Preorder/pd</i>
8	Burdick, Elise	RLFSC	Basic 4	<i>Preorder/pd</i>
9	Briggs, Erin	WFSC	Pre-Pre	<i>Preorder/pd</i>
10	Hansen, Hailey	AFSC	Basic 5	<i>Preorder/Owe \$5</i>
11	Hansen, Madison	AFSC	Basic 2	<i>Preorder/Owe \$5</i>
12	Harstad, Misha	AFSC	Freeskate 1	<i>Preorder/pd</i>

Group 2 ~ 8:20 - 8:40 a.m.

1	Glomski, Jocelyn	VFSC	Basic 6	<i>Preorder/pd</i>
2	Glomski, Nicolette	VFSC	Beginner	<i>Preorder/pd</i>
3	Manton, Emily	VFSC	Basic 6	<i>Preorder/pd</i>
4	Rahn, Marissa	VFSC	LTD Beg.	<i>Preorder/pd</i>
5	Ronke, Taryn	WFSC	Freeskate 4	<i>Preorder/pd</i>
6	Ronke, Tatum	WFSC	Pre-Pre	<i>Preorder/pd</i>
7	Ronke, Tegan	WFSC	Freeskate 2	<i>Preorder/pd</i>
8	Ronke, Taylor	WFSC	Pre-Pre	<i>Preorder/pd</i>
9	Schaefer, Bailey	AFSC	Basic 6	<i>Preorder/pd</i>
10	Kohrs, Haley	MFSC	Pre-Pre	<i>Preorder/pd</i>
11	Wheaton, Andrea	MFSC	Preliminary	<i>Preorder/pd</i>
12	Peterson, Katy	VFSC	Pre-Pre	<i>Preorder/Owe \$5</i>

LOCAL ACCOMMODATIONS & DIRECTIONS

ACCOMMODATIONS: Two hotels are offering special rates during the competition. Locations have been secured to serve various interests. Be sure to mention the “Lakes Area Classic Rate” through Diamond Edge Figure Skating Club when you call to reserve your room.

- Holiday Inn and Conference Center, 2100 East Hwy 12, Willmar, MN 1-877-405-4466 or (320) 235-6060; \$89.99 single room/per night, \$99.99 double room/per night. Check out their website at www.hiwillmar.com to view a complete list of amenities and directions.
- Comfort Inn, 2200 East Hwy 12, Willmar, MN 1-877-241-5215 or (320) 231-2601; \$84.99 single room/per night, \$89.99 double room/per night. Check out their website at www.comfortinnwillmar.com to view a complete list of amenities and directions.

For more information on area accommodations please call Beth at 1-800-845-8747 or email bfischer@seeyouinwillmar.com.

DRIVING DIRECTIONS TO THE WILLMAR CIVIC CENTER:

Going west on Hwy US-12,
Turn RIGHT (North) onto CR-9
[CR-9 NE]; follow signs to Willmar
Civic Center
Arrive at 2707 Arena Dr.

Going North on US Hwy 71/23, Bear
right at stoplights (15th Ave NE)
continue north on Civic Center Drive

Coming South on US Hwy 71/23,
Turn left at stoplights (15th Ave NE)
continue north on Civic Center Drive

Get specific directions from your
home by going to
www.mapquest.com or
www.randmcnally.com and we will
See You in Willmar!



INQUIRIES – Please contact Jolene Borka at (320) 354-4330-home/(320) 282-8962-cell/email borka@tds.net; Beth Fischer (320) 214-0122-home/(612) 812-7912-cell/email bfischer@seeyouinwillmar.com; or Sue Kidrowski at (320) 599-4498-home/(320) 894-9287-cell/email jskidrow@tds.net with any questions.